

# Project Proposals on Mt. Bachelor

Deschutes National Forest, Bend - Fort Rock Ranger District

August 2023

The **Bend - Fort Rock Ranger District** of the **Deschutes National Forest** in **Deschutes County, Oregon** invites you to review and comment on several project proposals from Mt. Bachelor. The proposals are described on the following page.

Mt. Bachelor is located entirely within the Deschutes National Forest and operates under a Special Use Permit issued by the United States Forest Service (USFS). Projects on Mt. Bachelor are subject to the NEPA process, which includes environmental and cultural resource reviews as well as providing an opportunity for public engagement.

Some improvements and projects on Mt. Bachelor have already been approved through their Master Development Plan. The projects included in their plan were analyzed in an Environmental Impact Statement (EIS) and Record of Decision that was signed in 2013.

Projects in this letter fall in categories of action that may be excluded from documentation in an EA or EIS.

**It would be most helpful to receive comments by September 20, 2023. Submit comments by email to: [comments-pacificnorthwest-deschutes-bend-ftrock@usda.gov](mailto:comments-pacificnorthwest-deschutes-bend-ftrock@usda.gov).** Please put the name of the project in the subject line. Comments must be submitted as part of an actual email message, or as an attachment in Microsoft Word, rich text format (rtf), or portable document format (pdf) only. Comments submitted to other email addresses, in any other format, or that contain viruses will be rejected.

Electronic submissions are strongly encouraged. However, if necessary, comments may be submitted by post mail to: Kevin Larkin, District Ranger, Bend - Fort Rock Ranger District, 63095 Deschutes Market Road, Bend OR 97701. Hand delivered comments are discouraged at this time.

Comments submitted are part of the public scoping process under the National Environmental Policy Act (NEPA), 40 CFR parts 1500-1508, Names and contact information associated with comments will become part of the public record and may be released under the Freedom of Information Act (FOIA), 5 USC 552.

For more information about any of these projects, please contact Kellie Roussos, NEPA Planner, by email at [kellie.roussos@usda.gov](mailto:kellie.roussos@usda.gov)



Sincerely,

KEVIN W. LARKIN  
District Ranger



## **Catyard Expansion: Additional Snowcat Parking at the Vehicle Maintenance Shop**

Mt. Bachelor is proposing to create additional electrical plug-in parking on the snowcat side of the vehicle maintenance shop (also known as the catyard) at Mt. Bachelor (Figure 1). The resort's winter equipment fleet has exceeded the number of electrical plug-ins they have available. This would require clearing second growth and approximately twenty 6 to 10 inch dbh lodgepole pines from an approximately 50 feet by 150 feet area. Ground disturbing activities would include trench that is 200 feet long by 24 inches wide by 40 inches deep to connect the new plug-ins to power from the building. Two holes each 4 feet wide by 8 feet deep by 4 feet long to set the light and power poles. Work would be done with a mini excavator.

## **West Village Stage Drain**

This project proposes to install a catch basin drain and culvert to divert water away from the West Village stage to an existing erosion control ditch (Figure 2). The West Village stage is at the low point in the West Village base area and during warm spring conditions or rain events a puddle will form around high voltage electrical boxes. The project would include a 24 inch wide by 225 feet long ditch, ditch depth would vary from 2 feet to 10 feet dependent upon terrain to create proper water drainage angles. The project would also include a 6 feet by 6 feet by 6 feet hole for the catch basin. The catch basin would connect to an existing drainage ditch via an outflow pipe. Work would be done with a mini excavator and hand tools.

## **Powerline Right of Way Road Maintenance**

Mt. Bachelor is proposing to perform road maintenance within the right of way for a Midstate Electric Cooperative (MEC) powerline that serves Mt. Bachelor (Figure 3). This work would take place outside of the ski area. Mt. Bachelor's power supply is dependent on MEC equipment and their ability to access the powerline. Road maintenance would improve MEC's ability to maintain the overhead powerline. Mt. Bachelor is requesting to maintain the powerline access road by grading and reshaping. Work would also include managing erosion from spring run-off where needed to accommodate power line utility trucks. The road would stay in its original alignment.

## Lift Gantry Conduit Replacement

This project proposes to replace damaged conduit for lift access gates at Cloudchaser, Sunrise, Little Pine, Outback, and Northwest lifts by trenching the existing route from the lift shacks to the gantries holding the access gates. This would be a direct replacement of what is already in the ground.

Trench dimensions at each lift are as follows:

- Cloudchaser – 60 feet by 24 inches by 30 inches
- Sunrise – 45 feet by 24 inches by 30 inches
- Little Pine – 60 feet by 24 inches by 30 inches
- Outback – 62 feet by 24 inches by 30 inches
- Northwest – 55 feet by 24 inches by 30 inches

These older style gantries that hold lift access gates have wiring inside of the gantry. As the gantries are raised and lowered due to snowpack, the wires get pulled or pinched and break. Over the years the conduits in the ground have had extra wires pulled through them and Mt. Bachelor can no longer pull wires through. Mt. Bachelor would be replacing the buried conduit and setting up these gantries with external wire routing where possible. Work would be done with a mini excavator and hand tools.

## Surface Lift Improvements

Mt Bachelor is proposing to make improvements to two surface lifts (also known as magic carpets). One surface lift would be adjusted and one would be relocated. The current surface lift unload height is set too low, so when Mt. Bachelor receives around 100 feet of snowfall there are challenges in maintaining the unload grade. This becomes a safety issue as guests are not able to clear unloading areas. Work would be done with telehandlers, mid-size excavator, and a tracked skid steer.

For Chipmunk Carpet, Mt Bachelor is proposing to adjust the run directly above the carpet with some cut and fill to repair old water erosion issues and to allow for more space at the unload of the carpet (Figure 4). The proposed disturbance area is a 50 feet by 125 feet cut above the carpet. Mt. Bachelor would relocate the fill to another area on the mountain (marked on maps).

For First Rays Carpet, Mt. Bachelor is proposing to relocate and lengthen the carpet to provide better progression for guests (Figure 5). The relocation would include:

- Power trenching – approximately 600 feet long x 36 inches deep x 24 inches wide.
- Addition of a gravel base under the concrete foundation blocks to level out the area.
- Lift tower culvert installation – Mt. Bachelor proposes to install an old 24 foot lift tower as a culvert under the carpet base to divert water safely under this machine. Some second growth vegetation would need to be cleared.

## Biomass Plant Pipe Route Amendment

Mt. Bachelor continues to implement projects that were approved in the 2013 Mt. Bachelor Ski Area Improvements Environmental Impact Statement (EIS) which led to the approval of their Master Development Plan. A biomass processing facility was included in the Mt. Bachelor Master Development Plan. A 2022 decision approved the location and design of the biomass facility. Mt. Bachelor is now requesting to amend the piping routes to allow for more efficient heat distribution throughout their West Village base area (Figure 6 and Figure 7). Some previously approved piping routes would be abandoned and replaced with the proposed routes below.

### Amendment Trench Dimensions:

- West Village Plaza Amendment – 3 feet by 4 feet by 530 feet
- West Village Lodge Amendment – 3 feet by 4 feet by 210 feet
- BBAB / Todd Lake Building Amendment – 3 feet by 4 feet by 160 feet
- Vehicle Maintenance Amendment – 3 feet by 4 feet by 2161 feet
- Facilities Maintenance Amendment – 3 feet by 4 feet by 110 feet
- Water Line Amendment – 3 feet by 4 feet by 640 feet
- Wastewater Connection – 3 feet by 4 feet by 260 feet
- Gas Line Amendment – 6 feet by 4 feet by 73 feet

This amendment would allow for more efficient heating of buildings and give the ability to control distribution of heat to each building individually. All digging would be through established paved parking lots and roads on the resort. Work would be done with excavators, loaders, dump trucks, skid steers, and vacuum trucks.

*USDA Non-Discrimination Policy Statement*

[DR 4300.003 USDA Equal Opportunity Public Notification Policy \(June 2, 2015\)](#)

*In accordance with Federal civil rights law and U.S. Department of Agriculture (USDA) civil rights regulations and policies, the USDA, its Agencies, offices, and employees, and institutions participating in or administering USDA programs are prohibited from discriminating based on race, color, national origin, religion, sex, gender identity (including gender expression), sexual orientation, disability, age, marital status, family/parental status, income derived from a public assistance program, political beliefs, or reprisal or retaliation for prior civil rights activity, in any program or activity conducted or funded by USDA (not all bases apply to all programs). Remedies and complaint filing deadlines vary by program or incident.*

*Persons with disabilities who require alternative means of communication for program information (e.g., Braille, large print, audiotape, American Sign Language, etc.) should contact the responsible Agency or USDA's TARGET Center at (202) 720-2600 (voice and TTY) or contact USDA through the Federal Relay Service at (800) 877-8339. Additionally, program information may be made available in languages other than English.*

*To file a program discrimination complaint, complete the USDA Program Discrimination Complaint Form, AD-3027, found online at [http://www.ascr.usda.gov/complaint\\_filing\\_cust.html](http://www.ascr.usda.gov/complaint_filing_cust.html) and at any USDA office or write a letter addressed to USDA and provide in the letter all of the information requested in the form. To request a copy of the complaint form, call (866) 632-9992. Submit your completed form or letter to USDA by: (1) mail: U.S. Department of Agriculture, Office of the Assistant Secretary for Civil Rights, 1400 Independence Avenue,*



Figure 1. Additional Snowcat Parking at the Vehicle Maintenance Shop.



Figure 2. West Village Stage Drain, trench location in blue.



Figure 3. Powerline Right of Way Road Maintenance (proposed work area in yellow).





Figure 4. Surface Lifts Improvements for Chipmunk Carpet showing cut area (blue) and lift location (green).



Figure 5. Surface Lifts Improvements for First Rays Carpet showing new location (green), lift tower location (blue), power trench (red) and Chipmunk fill disposal area.

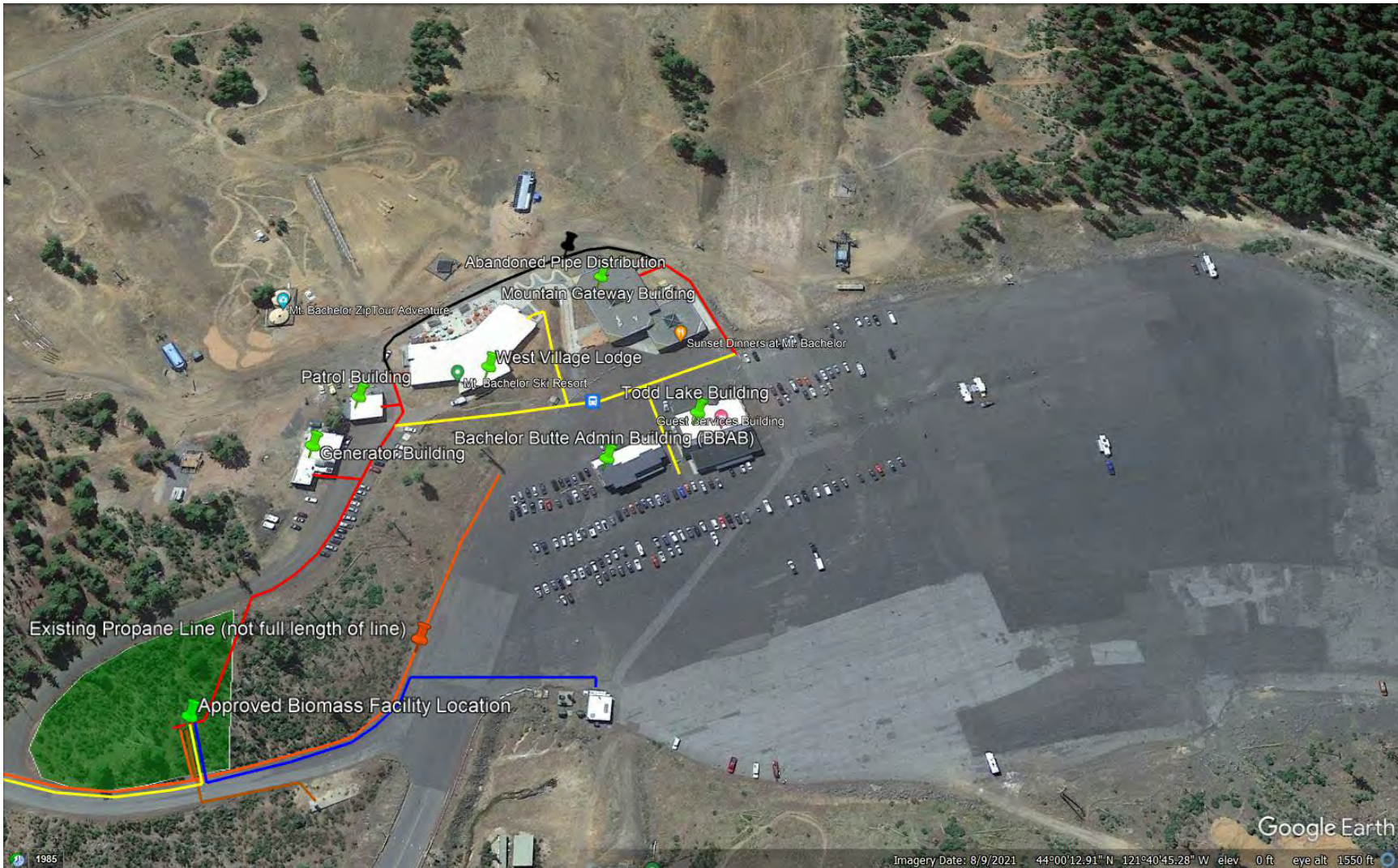


Figure 6. Biomass Facility Ammendment showing approved routes (red), ammended routes (yellow), abandoned routes (black), and propane line (orange).



Figure 7. Biomass Facility Ammendment showing approved routes (red), ammended routes (yellow), and propane line (orange).