

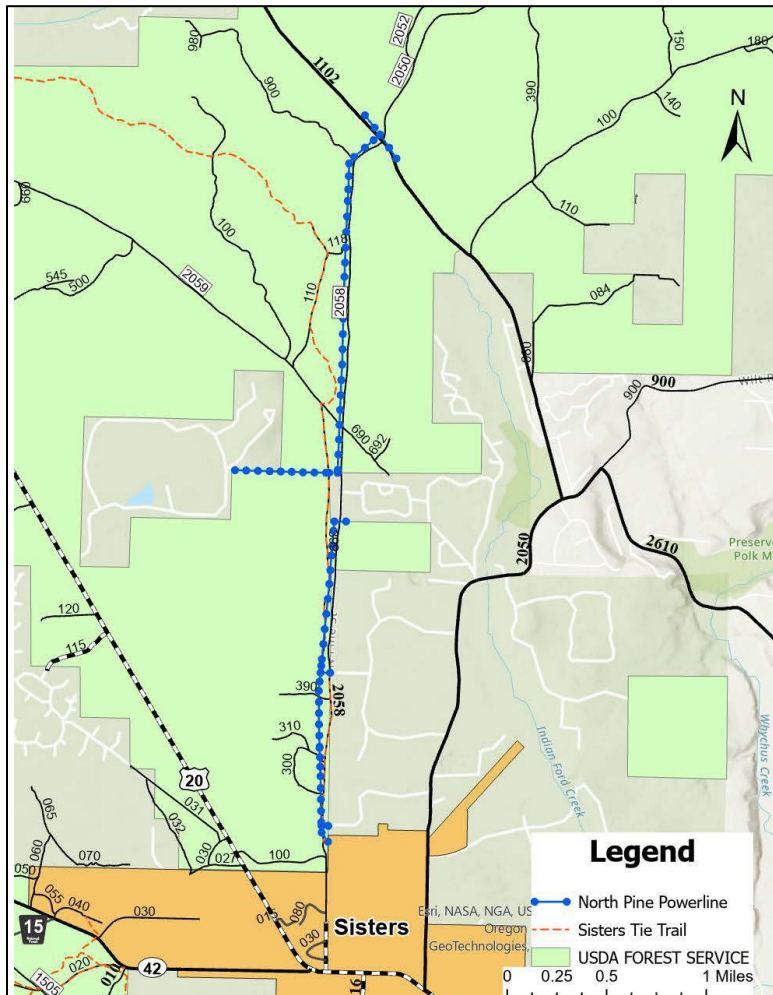


Deschutes National Forest Sisters Ranger District| April 2024

North Pine Street Powerline Right of Way Vegetation Management

Later this spring, vegetation management will be occurring on approximately 3.5 miles of existing powerline along North Pine Street (Figure 1).

Central Electric Cooperative (CEC) is authorized to manage trees and vegetation within and adjacent to the powerline right of way (ROW) on National Forest lands. Minimum clearance standards are set by the National Electrical Safety Co and Public Utility Commission. CEC is completing this ongoing maintenance to ensure reliable electricity to the greater Sisters area. Additionally, ROW clearing can mitigate sources of wildfire ignition and improve CEC worker safety.



Vegetation management along this section of powerline will include felling approximately 140 trees within 10 feet of the power transmission line corridor. In addition, trees alongside the corridor may be trimmed and hazard trees outside the 10 foot corridor may be felled. Hazard identification includes trees or branches with the potential to come in contact with the line. CEC will use existing roads and incorporate protection measures to minimize impacts to sensitive natural resources.

Please be aware that the Sisters Tie Trail and North Pine/ FS 2058 road may be periodically closed this May and June while work is occurring. Please watch for trail closure signs at the trailhead and along the trail. These closures are in place to protect both public and worker safety.

For more information on the planned powerline right of way maintenance, please contact Lisa Machnik at lisa.machnik@usda.gov.

Sincerely,

Ian Reid
District Ranger